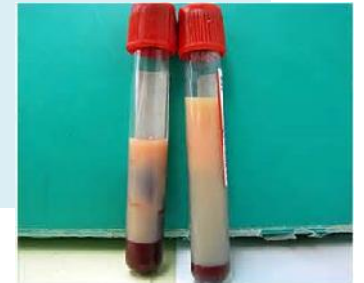


Digestion of Lipids

- Initiated by lingual & gastric lipases
- Final digestion of TAG - in small intestine
- Lipase act on TAGs (TriAcylGlycerols)
- Enter into lacteals (small lymph vessels in villi)
- Lymph draining small intestine called Chyle
- Chyle - milky appearance after fat-rich meal
- This appearance due to chylomicrons

Chylomicrons : Droplets highly emulsified TAGs (1 μm diameter)

- After fat rich meal - blood plasma appears opalescent (milky) due to high Conc. Of chylomicrons
- This appearance disappears in 1-2 hrs, as TAGs are removed from blood by adipose tissues



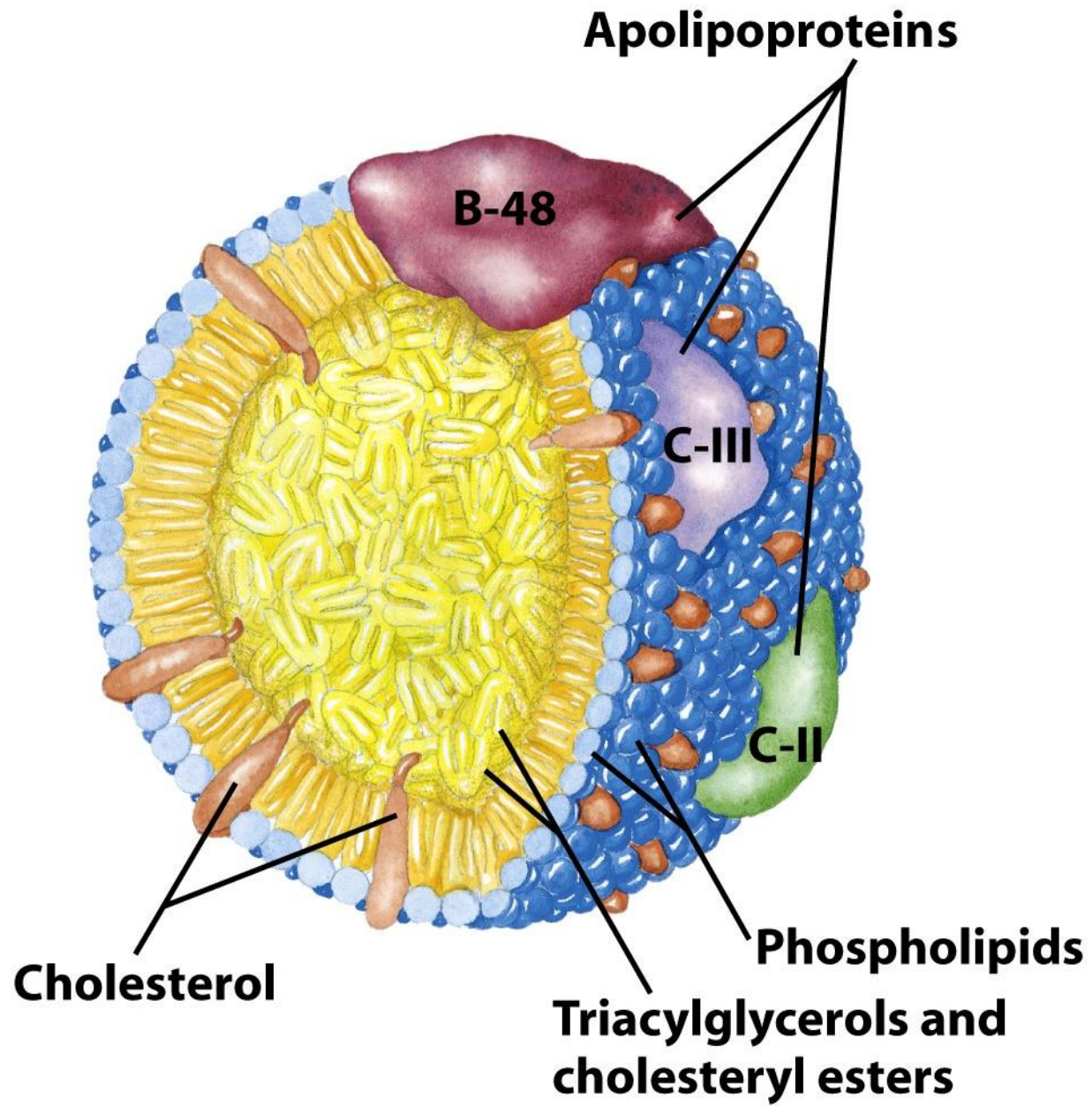


Figure 17-2
Lehninger Principles of Biochemistry, Fifth Edition
© 2008 W.H. Freeman and Company

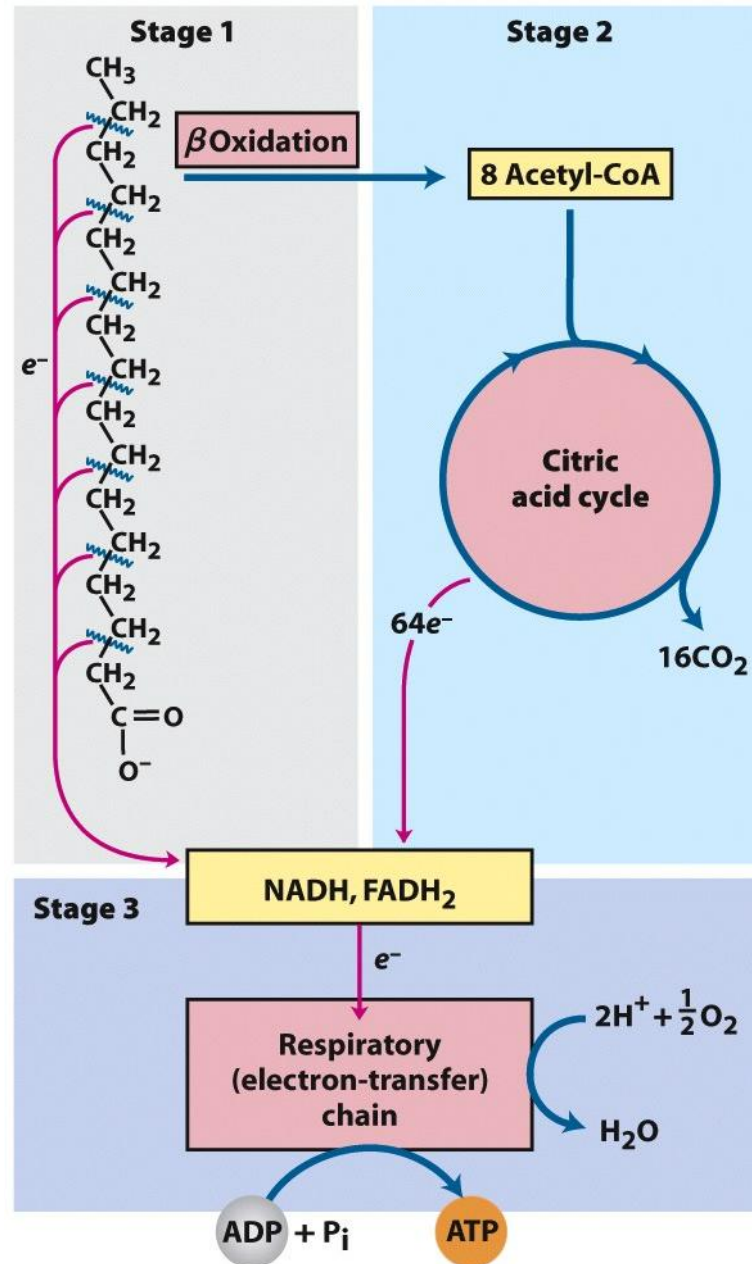


Figure 17-7
Lehninger Principles of Biochemistry, Fifth Edition
 © 2008 W. H. Freeman and Company



Box 17-1 figure 1

Lehninger Principles of Biochemistry, Fifth Edition

© 2008 W. H. Freeman and Company